



LaseLCPS-STC - Load Collision Prevention System -STC

Product module *CEWS* Container Logistics



The solution LaseLCPS-STC - Load Collision Prevention System is designed to ensure a collision prevention between load and container on the vessel. The use of robust and state-of-the-art laser technology has the objective to diminish the risk of accidents while STS spreader operations.

This measurement system consists of two LASE 2000D laser scanners (3D version with LASE 3000D laser scanners) which are mounted under the trolley. The specific software application collects the scan data, does all necessary calculations and sends the results to the PLC.

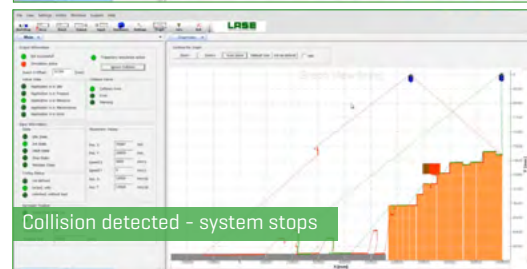
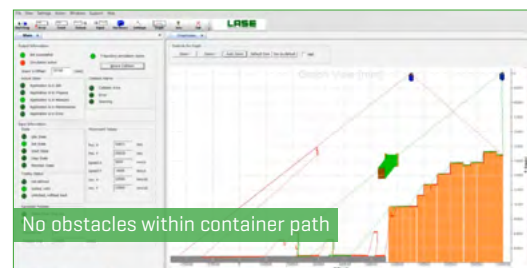
The laser scanners look downwards with a scan plane across two bays. When the trolley starts driving over the vessel, the measurement system generates a 2D-profile [resp. 3D-] of the stacks within the bays. Additionally the spreader is in the view of the scanners. By comparing the actual load position [spreader with/without container] with the profile of the stacks a collision prevention is ensured.

The LaseLCPS measurement system is primarily designed for STS crane operations and serves both to increase the safety and an efficient workflow in container handling.

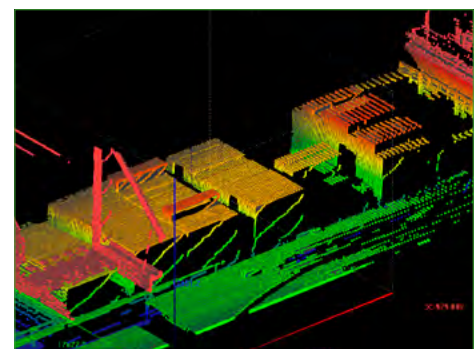
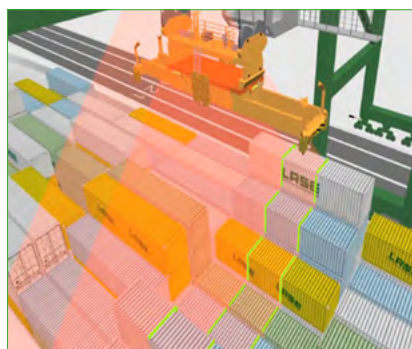
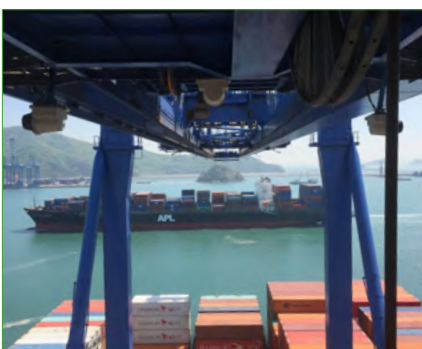
This intelligent and innovative solution is built to diminish the risk of collisions and accidents during vessel loading and unloading. The measurement system by LASE is applicable for topography detection and collision prevention at STS cranes.

Customer Benefits & Features:

- 2D and/or 3D container profiling
- Detection of ship's longitudinal displacement
- Cell guide detection for fast approach
- Collision prevention between spreader and container stacks on vessels
- Adjacent object detection of catwalks, ship cranes etc.
- Gentle container handling through soft landings
- Stack topography verification
- Less spreader wear and noise reduction
- Driver assistance



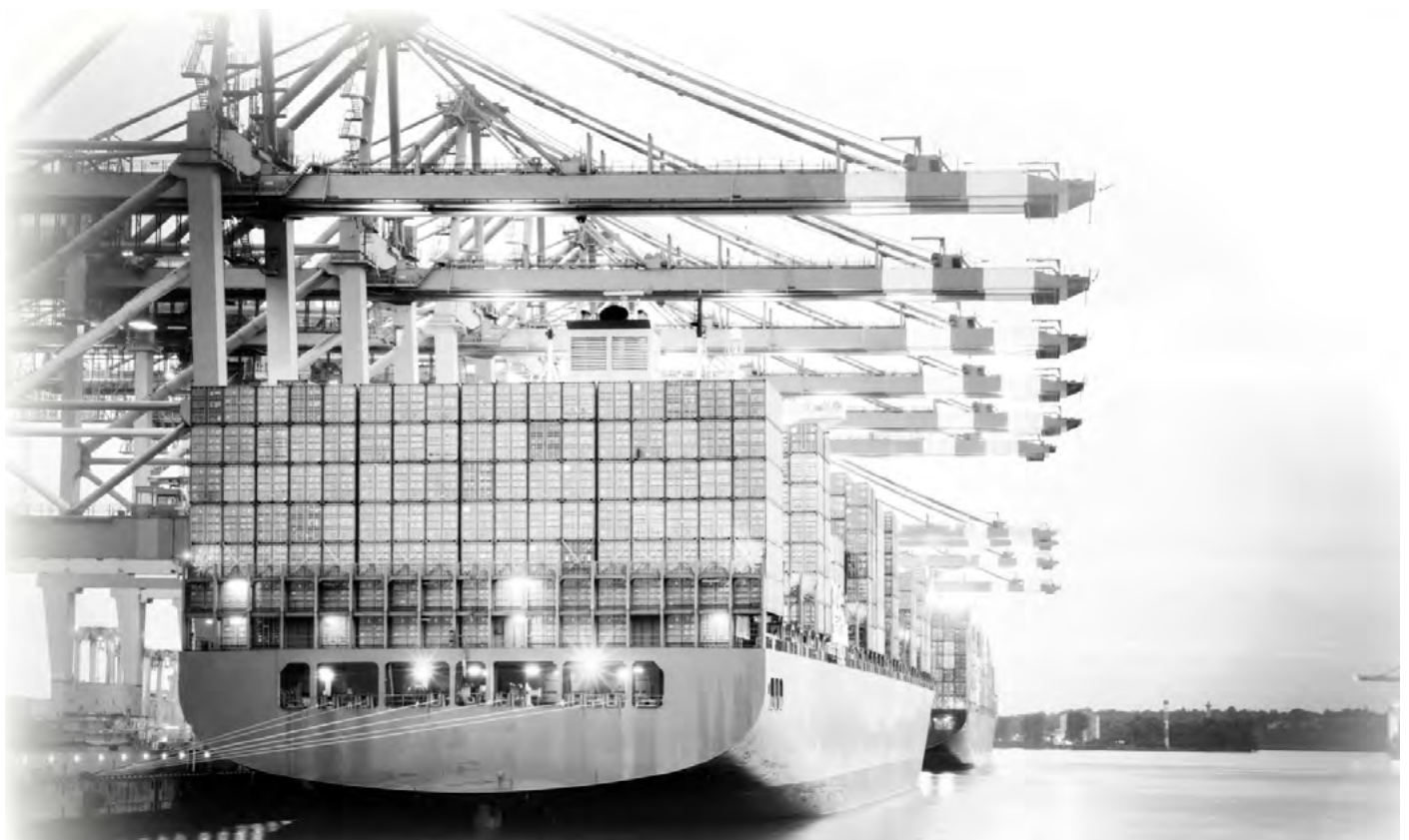
Function principle



LASE offers innovative and productive solutions by combining state-of-the-art laser hardware technology and sophisticated software applications. We deliver a broad range of precise and reliable 1D, 2D and 3D laser systems, which can be used for several measurement tasks.

We look to develop long-term relationships with our customers to drive projects forward and help improve safety and efficiency at a huge diversity of applications worldwide through working closely with them.

COMPETENCE, CREATIVITY AND PASSION lead us to be the ideal partner for your requirements. Convince yourselves of our broad portfolio of innovative products and solutions on our corporate website.



Product module **CEWS** Container Logistics

Note:

We reserve the right to proceed technical changes or modify the contents of this document without prior notice. LASE Industrielle Lasertechnik GmbH does not accept any responsibility whatsoever for potential errors or possible lack of information in this document. We reserve all rights in this document and in subject matter and illustrations contained herein. Any reproduction, disclosure to third parties or utilization of its contents - in whole or in part - is forbidden without prior written consent of LASE Industrielle Lasertechnik GmbH.

Contact

LASE Industrielle Lasertechnik GmbH

Rudolf-Diesel-Str. 111
46485 Wesel

Telefon: +49 [0] 281 - 9 59 90 - 0
Fax: +49 [0] 281 - 9 59 90 - 111
E-Mail: info@lase.de
Website: www.lase.de

